



# SAFARI SPECIALISTS



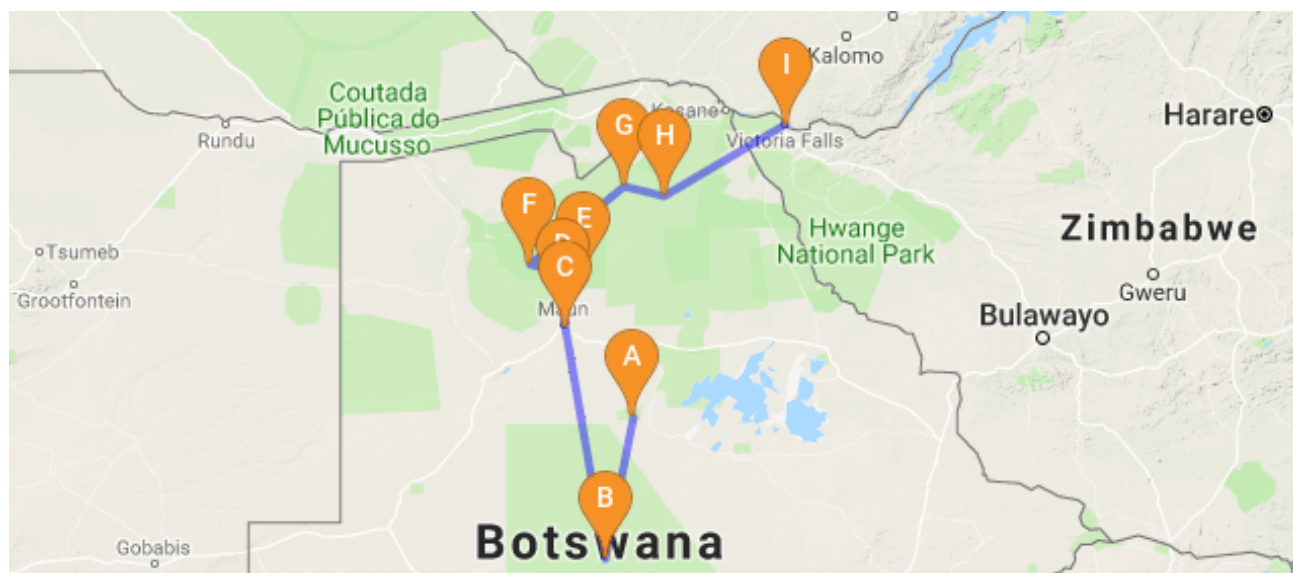
**BOTSWANA IS OUR HOME SAFARIS ARE OUR PASSION**

## 16 nights Leopard Camping Safari 2020

Hainaveld - Central Kalahari Game Reserve - Maun - Okavango Delta - Moremi Game Reserve – Savuti  
(Chobe National Park) - Chobe National Park - Victoria Falls, Zimbabwe

17 Days / 16 Nights

Starts Maun/Ends Victoria Falls



[Click here to view your Digital Itinerary](#)

### Introduction

This is a Semi Participation Safari which means that you set up your own tents (with guidance/assistance) and assist with packing/unpacking your luggage, but aside from this the camp chores are done by the camp assistant and guide (cooking/cleaning/firewood etc). It is one of the most easily mobile forms of camping and allows you to visit a range of areas in a limited space of time. This trip travels with a maximum of 12 guests.

Start	Accommodation	Destination	Basis	Duration
Day 1	Bush Ways Mobile Safari Hainaveld	Hainaveld	FB+	<b>1 Night</b>
Day 2	Bush Ways Mobile Safari CKGR	Central Kalahari Game Reserve	FB+	<b>4 Nights</b>
Day 6	Maun Lodge or similar	Maun	B, L	<b>1 Night</b>
Day 7	Bush Ways Mobile Safari Okavango	Okavango Delta	FB+	<b>2 Nights</b>
Day 9	Bush Ways Mobile Safari Mochaba	Greater Maun/Delta	FB+	<b>1 Night</b>
Day 10	Bush Ways Mobile Safari Moremi	Moremi Game Reserve	FB+	<b>3 Nights</b>
Day 13	Bush Ways Mobile Safari Savute	Savuti - Chobe National Park	FB+	<b>1 Night</b>
Day 14	Bush Ways Mobile Safari Chobe River	Chobe National Park	FB+	<b>2 Nights</b>
Day 16	Nguni Lodge or similar	Victoria Falls, Zimbabwe	B&B	<b>1 Night</b>

**Key**

B&B: Bed and Breakfast. FB: Dinner, Bed, Breakfast and Lunch. FB+: Dinner, Bed, Breakfast, Lunch and Activities Daily

**Transfers**

Day	Company	Details
01	Bush Ways Safaris	Maun – Hainaveld (4 hours transfer)
02	Bush Ways Safaris	Hainaveld – Central Kalahari Game Reserve (4-5 hours game drive transfer)
06	Bush Ways Safaris	Central Kalahari Game Reserve – Maun (5-6 hours transfer)
07	Bush Ways Safaris	Maun - Okavango (1.5-2 hours transfer)
09	Bush Ways Safaris	Okavango – Mochaba (1.5 – 2 hours transfer)
10	Bush Ways Safaris	Mochaba – Moremi Game Reserve (3-4 hours game drive transfer)
12	Bush Ways Safaris	Moremi Game Reserve – Khwai (game drive transfer)
13	Bush Ways Safaris	Khwai – Savute (7-8 hours game drive transfer)
14	Bush Ways Safaris	Savute – Chobe River (5-6 hours game drive transfer)
16	Bush Ways Safaris	Chobe River – Victoria Falls (2-3 hours transfer)

**Cost of the safari 2020 in EUR**

Seasons	Cost Per Person Sharing	Single Surcharge
Low Season : Jan – June and Nov – December 2020	2630 EUR per person sharing	EUR 130 per person
High Season : July – October 2020	2825 EUR per person sharing	EUR 130 per person

**Departure Dates 2020:**

**Low:** 02 – 18 January; 23 January – 08 February; 13 – 29 February; 05 – 21 March; 09 – 25 April; 07 – 23 May; 28 May – 13 June; 21 June – 07 July; 25 October – 10 November; 08 – 24 November; 10 – 26 December

**High:** 05 – 21 July; 19 July – 04 August; 02 – 18 August; 16 August – 01 September; 30 August – 15 September; 13 - 29 September; 27 September – 13 October; 11 - 27 October

**Please Note:**

- All departures travel with a German speaking translator if any German language guests are booked on the safari (except 13 – 29 February 2020)
- Underlined dates travel with a French translator
- A pre-night in Maun is required to join this safari, due to early departure from Maun, please discuss options with your consultant
- Single supplement applies to voluntary singles only, single travelers may book on a 'share' basis where they will be nominated to share with a same-sex travel companion on the safari
- The above rate is subject to change due to major currency fluctuations and fuel surcharges
- Rates subject to National Park Fee increase
- Optional Pre and Post-Safari Extensions on request

**Park Fees and Departure Taxes and Tourism Levy**



Please be aware that Park Fees, Conservation Levies, VAT, Airport Taxes and Government Levies may increase in 2020. Regrettably such increases are beyond our control and are excluded from any bookings, provisional or confirmed. We will inform you should any increase be advised.



#### Travel for Impact – Responsible Travel

By booking this itinerary, you donate USD\$2 for every night of travel per person on the booking. Your donation goes to Travel for Impact (TFI) and ensures that your safari has a meaningful impact on the people who live locally. For more information on giving back to your chosen destination of travel, visit [www.travelforimpact.com](http://www.travelforimpact.com)



#### Feed a Child Botswana

Safari Specialists contribute USD\$5 per person per booking to Feed A Child Botswana. This contribution goes directly towards the purchase of Nutri-meal, a fortified cereal provided to undernourished children in our local community in Maun.

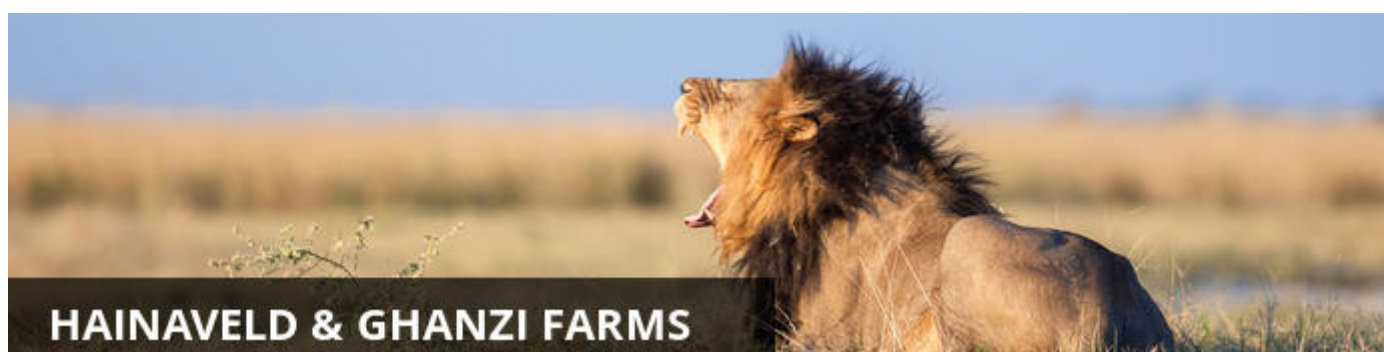


#### Okavango Air Rescue

Please note that we include Okavango Air Rescue patronage. They provide paramedic or Doctor assisted helicopter medical evacuation as required, in conjunction with your travel insurance. Please discuss further details with your consultant and visit [www.okavangorescue.com](http://www.okavangorescue.com)

## Day 1: Bush Ways Mobile Safari, Hainaveld

The safari begins in Maun where your guide will meet you at 07h30 at a pre-arranged meeting point. You will travel 180km to a game farm on the northern border of the Central Kalahari Game reserve, set up camp and have a safari briefing. In the afternoon you will participate in a nature walk led by local San Bushmen trackers. They will share their intricate bush knowledge and give you an insight into their unique and intriguing culture. Camping at a lodge campsite with fixed ablutions. (L, D)



The Hainaveld and Ghanzi Farms provide a soft introduction to the harsh expanses of the Central Kalahari Game Reserve next door. This is also one of the best places in Botswana to get a glimpse into the hunter-gatherer lifestyle of the San people, who have survived in the arid desert for tens of thousands of years. These farms are private, fenced game farms containing desert-adapted wildlife from giraffes to ostriches, gemsbok and springbok. Ease of access, together with high chances of finding black-maned Kalahari lions during the winter months are key draw cards for heading out on safari here.

Unlike other desert safaris in Botswana, you won't be restricted by national park rules here. The freedom to look for nocturnal desert creatures on a night drive, sit out in a hide to soak up the sightings or to explore the bush on foot is what makes this area unique. Despite the fences, big predators such as lion, leopard and

cheetah move in and out of the farms throughout the year. During the dry winter months, the big cats often prefer the easy access to water at the pumped waterholes here over the Central Kalahari itself. When you're done with the typical safari routine, head out into the desert with the San bushmen. Watch in awe as these traditional hunter-gatherers pull food, water and tools for survival out of the sand in front of your eyes.

### **Overnight: Bush Ways Mobile Safari Semi Participation Shared Ablutions Hainaveld**

**Includes:** meals, activities, park fees

**Excludes:** beverages (alcohol, soft drinks and bottled mineral water) personal spending, travel insurance, sleeping bag and pillow

**Activities:** afternoon nature walk with bushmen

Bordering the vast Central Kalahari Game Reserve, The Hainaveld provides the opportunity to discover the Kalahari up close and on foot, something that is not allowed in the neighbouring reserve. Here you can participate in a nature walk led by local San Bushmen trackers. They will share their intricate bush knowledge and give you an insight into their unique and intriguing culture.

The camp consists of a main area with campfire and mess tent. Your accommodation is in 2.1m x 2.1m dome tents. A 5cm high density foam mattress is provided for each guest.

Camp is set up on arrival, followed by a safari briefing. The afternoon nature walk provides the opportunity to learn about the Kalahari from its oldest inhabitants – The San Bushmen.



### **Day 2-6: Bush Ways Mobile Safari, Central Kalahari Game Reserve**

You will wake up as the sun rises and enter the pristine wilderness of the largest game reserve in Botswana. The next four days will be spent exploring the undeveloped wilderness of the northern region of the Kalahari, moving from camp to camp. Travelling time between camps from Hainaveld to Passarge Valley to Deception Valley is approximately 4-5 hours each leg with game viewing along the way.

Savour the vast open spaces, clear night skies and uninterrupted beauty on game drives and at camp. This is adventure camping in its purest form as water and communications are limited and we travel as a self-sufficient group. Camping is in a private designated campsite with fixed bush ablutions. (B, L, D)



If the middle of nowhere had a name, it would be the Central Kalahari Game Reserve. Out here, you'll learn the true meaning of remote, wild, vast and open nothingness. This is one of the biggest wildlife reserves on the planet, anchored atop the largest sand basin in the world: the Kalahari Desert.

Here, the skies are huge and tall yellow grasses stretch on forever. Standing under the stars at night, you could easily believe yourself to be alone with the universe, until the distant call of a Kalahari lion tells you otherwise.

Come here during the later green season months (January – April) and the open plains turn a brilliant green against blinding blue skies. Huge herds of white-faced springboks and long-horned gemsbok spill into the open landscape, giving birth to their young while hungry cheetahs and lions follow close by. During the winter (May – October) the landscape fades yellow and brown as antelope herds thin out in search of food.

Sunsets here sink slowly through the sky, growing pink and red the closer they drop to earth. Here, you can watch the sun hit the ground from almost anywhere, with only an acacia tree or two lying between you and the horizon.

The grasslands of the Kalahari are an open stage, changing from hour to hour and, even more dramatically, from one month to the next. A plain lying empty during the morning might be watched over by birds of prey by the afternoon. As the light sets on the day, you might find bat-eared foxes and scavenging jackals trotting across your field of vision instead. Or, if you're really lucky, you just might catch one of the Kalahari's big cats strolling past as antelopes freeze into statues waiting for whatever comes next.

### **Overnight: Bush Ways Mobile Safari Semi Participation Shared Ablutions CKGR**

**Includes:** meals, activities, park fees

**Excludes:** beverages (alcohol, soft drinks and bottled mineral water) personal spending, travel insurance, sleeping bag and pillow

**Activities:** game drives in Central Kalahari Game Reserve

The Kalahari is silent and vast, with waist-high golden grass punctuated by dwarfed trees and scrub bushes. Wide and empty pans meet a soft blue sky. During and shortly after summer rains, the grasslands of the reserve teem with wildlife, which gather at the best grazing areas. These include large herds of springbok and gemsbok, as well as wildebeest, hartebeest, eland and giraffe. It is also home to the famous Kalahari Black Maned Lion. The mysterious and seldom seen Brown Hyena is also a resident.

The camp consists of a main area with campfire and mess tent. Your accommodation is in 2.1m x 2.1m dome tents. A 5cm high density foam mattress is provided for each guest.

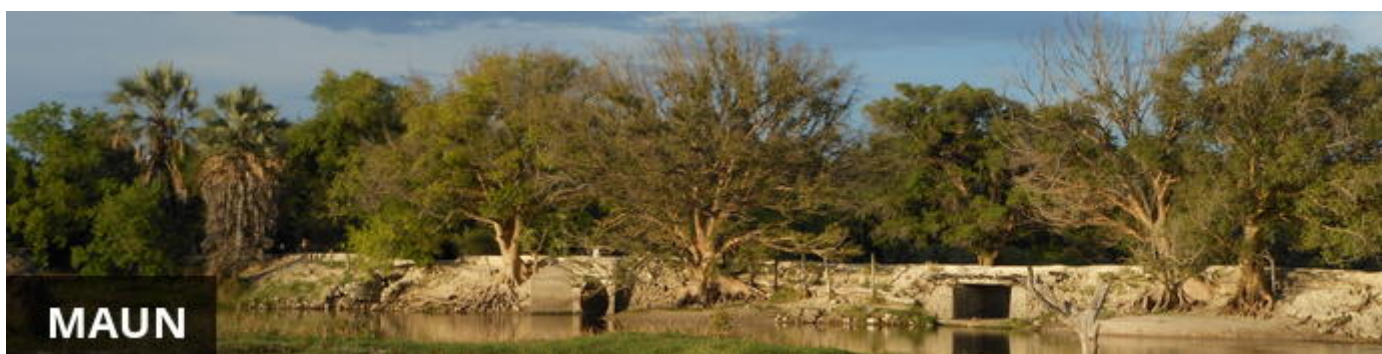
The Central Kalahari Game Reserve provides numerous opportunities for game drives. It is important to note that whilst camping in the National Parks you will need to return to camp by sunset to conform to the regulations and no off road driving is permitted.

### **Day 6: Bush Ways Mobile Safari, Maun Lodge/Guesthouse (or similar)**

After our final morning game drive in the Kalahari we return to Maun. In the afternoon, you will have the option of taking a scenic flight over the Delta (45 min. Maun to Maun scenic flight, rate EUR 125 min.3 persons – to be booked during the safari, payment in cash only). This magical experience provides another perspective of the Okavango Delta's distinctive water system. During the flight it is even possible to spot large game animals such as Elephant, Giraffe and Hippopotami.

The night will be enjoyed in the comfort of a lodge/hotel. Dinner is at your own expense. (B, L)





Situated along the banks of the Thamalakane River, in the North-West District of Botswana, Maun, a term that derives its name from the San language, meaning "the place of reeds," serves as the administrative town centre of Ngamiland. Maun is notoriously known as a "Frontier" town, and is referred to as the 'gateway' to the Okavango Delta and Moremi Game Reserve as most tourists enter these destinations through this buzzing town.

Although classified as one of the fastest growing towns in Botswana, and boasting one of the busiest airports in Southern Africa, Maun still retains much of its old/traditional (village-like) character, which encompasses the old judicial court of chiefs who are still active. Reed and mud hut infrastructures are seen in and around town as well as donkeys/carts and livestock. However, numerous hotels, lodges, bed and breakfasts, shopping malls, post offices, a museum and a big hospital are available too. Maun also serves as the headquarters for the safari industry, tour operators and air charter companies that offer trips into the Okavango Delta and National Parks such as Moremi Game Reserve, Khwai, Savute, Makgadikgadi, Chobe, Nxai Pan to name a few, as well as monumental historical sites like the Tsodilo Hills. Opportunities to visit nearby cultural villages can also be arranged from this central point.

---

### **Overnight: Bush Ways Accommodated Mobile Safari Maun**

**Includes:** meals, activities, park fees, overnight in comfortable hotel/guesthouse accommodation

**Excludes:** dinner at the hotel, beverages (alcohol, soft drinks and bottled mineral water) personal spending, travel insurance, sleeping bag and pillow

**Activities:** optional scenic flight (additional cost)

Accommodation in Maun will be comfortable hotel or guesthouse level, each room with an en-suite bathroom and the main area with a bar and restaurant. Accommodation is generally at Maun Lodge or similar.

In Maun you will have the opportunity to catch up with family using internet or telephone access and refresh before the following leg of your safari.

---

### **Day 7-9: Bush Ways Mobile Safari, Okavango Delta**

Your adventure will take you to the southern tip of the Okavango Delta, a special corner of paradise. Once you have reached the edge of the Delta, you will meet your polers from the local community with their mekoro (traditional dugout canoes).

Quietly cruising along reed lined channels and floodplains, you will enjoy the spectacular landscape of this unique region during the tranquil transfer taking you deeper inside the Delta. You will spend two days exploring this beautiful area with mokoro excursions and guided nature walks on the islands and floodplains of the Okavango, camping wild with bush ablutions on a small island for two nights. (B, L, D)

*NOTE: You will leave your main luggage in the trailer and will need to pack a smaller bag (small backpack, hand luggage) with what you need for the 2 days on the island. Transfers from the mainland to the island*

where you will stay are done on traditional dugout canoes (mekoro) which cannot accommodate large bags. Your main luggage will safely remain in the vehicle that will be parked in a secured area while you are on the island.



The Okavango Delta is where the wild things are: an immense, waterlogged oasis alive with elephants and birdlife, adrift in the middle of Kalahari sands. The real magic of the Delta lies in its water, trickling through from far away highlands, and spreading across the channels and floodplains.

During winter in the Kalahari, when the sun has baked the earth bare and turned the desert its driest, water fills the Okavango; transforming the floodplains into a Noah's Ark of African wildlife.

As the water brings life to the delta, its local residents shape and recreate it. Termites slowly build mounds into islands, germinated with palm trees by passing elephants. Waterways open and close on the whim of wide-bottomed hippos, carving out channels where they crash through reeds, and leaving room behind them for exploration by mokoro.

The Okavango has many faces, which change throughout the year, prompted by that most unpredictable diva of all: the weather. Water levels rise and drop, expanding and shrinking islands, while animals move where the life is easiest and the grass greenest. In a few days, a sandy road driven by vehicle can become a waterway of unknowable depth, prompting a safari by boat instead.

Where and when you stay in the Okavango Delta will hugely influence what you do in the bush each day, the animals you're most likely to see and finally, the safari experience you'll have.

The delta's watery heart is best discovered by mokoro through shallow channels and floodplains, as well as crossing the islands on foot. For less water and more of the big game, visit a camp on its drier edges (including Moremi Game Reserve and the Khwai Community Area), jump on a vehicle and seek out the animals hiding in the woodlands.

### **Overnight: Bush Ways Mobile Safari Semi Participation Okavango**

**Includes:** meals, activities, park fees

**Excludes:** beverages (alcohol, soft drinks and bottled mineral water) personal spending, travel insurance, sleeping bag and pillow

**Activities:** mokoro excursions and guided nature walks

The Southern Tip of the Okavango Delta marks the start of a wetland paradise. On arrival you will meet your polers from the local community with their mekoros (traditional dugout canoes). Days in the Delta follow a different rhythm, marked by the gentle splash of the Mokoro pole.

The camp consists of a main area with campfire and mess tent. Your accommodation is in 2.1m x 2.1m dome tents. A 5cm high density foam mattress is provided for each guest.

Days on Mokoro Safaris are spent cruising quietly along reed lined channels and floodplains. You will enjoy the spectacular landscape of this unique region with a combination of Mokoro excursions and guided nature walks on the islands and floodplains of the Okavango, camping wild with bush ablutions on a small islands.






---

## Day 9: Bush Ways Mobile, Mochaba Crossing, Okavango Delta/Moremi

---

Leaving the channels of the Okavango Delta, you will start making your way towards the drier regions of the delta where you will camp and refresh before proceeding into the reserve the next day. (B, L, D)

### Overnight: Bush Ways Mobile Safari Semi Participation Mochaba Crossing

**Includes:** meals, activities, park fees

**Excludes:** beverages (alcohol, soft drinks and bottled mineral water) personal spending, travel insurance, sleeping bag and pillow

Mochaba Crossing is a campsite just before the village of Shorobe on the road to Moremi Game Reserve. There is a swimming pool and shared ablution facilities, offering a comfortable base to start your group safari. Your accommodation is in 2.1m x 2.1m dome tents. A 5cm high density foam mattress is provided for each guest.

Instead of staying in Maun town, you overnight in a community area located past the 'buffalo fence' where you can enjoy the sounds of the bush at night and enjoy a game drive before heading deeper into Moremi Game Reserve the following day.




---

## Day 10-13: Bush Ways Mobile Safari, Moremi Game Reserve

---

Early morning of Day 10, you will enter Moremi Game Reserve, one of the best wilderness areas of Botswana which covers swamp and dry areas. The next three days will be spent searching for the wide variety of wildlife and birds that this area is renowned for while absorbing the sounds and beauty of this region.

Game drives in the early morning as the sun rises and in the late afternoon as the sun sets will be the norm. After your morning game drives, you will return to camp for lunch and a siesta.

On Day 4 you will move campsites to explore a different area, usually the Khwai area, of this diverse park. Camping will be in private designated campsites with bush ablutions. (B, L, D)



## MOREMI GAME RESERVE

The Moremi Game Reserve is all about searching for big game; where the habitats are as diverse as the wildlife itself. Water-adapted antelopes and wary-eyed buffaloes spill out into floodplains, behind towering woodlands where leopards hide on the high branches. Dead trees cast silhouettes over elephant-filled savannas a stone's throw from papyrus-fringed channels stretching out to the delta beyond.

When you arrive in the Moremi Game Reserve, it's anyone's guess what you'll find lurking in the long grass. From wild dogs stalking waterbucks to long sunsets by a hippo-filled lagoon, the scenes will live on in memory long after the journey home.

Kick up sharp smelling clouds of dust on a morning drive, disturbing pockets of warm air in the reeds as you splash through water crossings in pursuit of a distant lion's call. Pause by the edge of large lagoons, squinting to catch mischief making hyenas as they emerge from the trees to drink.

When you get sick of game drives, discover the channels by boat while Squacco herons fly alongside you into the wind. Watch a lazy sunset with the blue-cheeked bee eaters before returning to dry land for more hardcore bush exploration.

As Moremi Game Reserve is bound by national park rules, activities here are limited to game drives during hours of daylight with no off-roading, and boat cruises on the permanent channels.

While most of the reserve is open to the public, two private lodges sit in the Mombo Concession to the north of Chief's Island, surrounded by the waters of the Okavango Delta. Boating isn't possible here, instead the area offers the ultimate in dry-land game viewing. Hailed as Botswana's predator capital, this exclusive corner is closed to outsiders and home to the big five, where the invitee list fills up years in advance.

### **Overnight: Bush Ways Mobile Safari Semi Participation Moremi**

**Includes:** meals, activities, park fees

**Excludes:** beverages (alcohol, soft drinks and bottled mineral water) personal spending, travel insurance, sleeping bag and pillow

**Activities:** game drives in Moremi Game Reserve

Your private camp is set up in a wilderness campsite in Moremi while you enjoy the sights and sounds of Botswana's prime game viewing area. The bird and animal life in Moremi is exceptional and diverse making the reserve one of the most unforgettable wildlife experiences in Africa. You will soon slip into the rhythm of tracking wildlife in the varying habitats of swampland, open plains and riverine forest.

The camp consists of a main area with campfire and mess tent. Your accommodation is in 2.1m x 2.1m dome tents. A 5cm high density foam mattress is provided for each guest.

Game drives in the early morning as the sun rises and in the late afternoon as the sun sets will be the norm. After your morning game drives, you will return to camp for lunch and a siesta.

Moremi Game reserve has a vast network of game drive routes and no two game drives are the same. However, it is important to note that whilst camping in the National Parks you will need to return to camp by sunset to conform to the regulations and no off road driving is permitted.

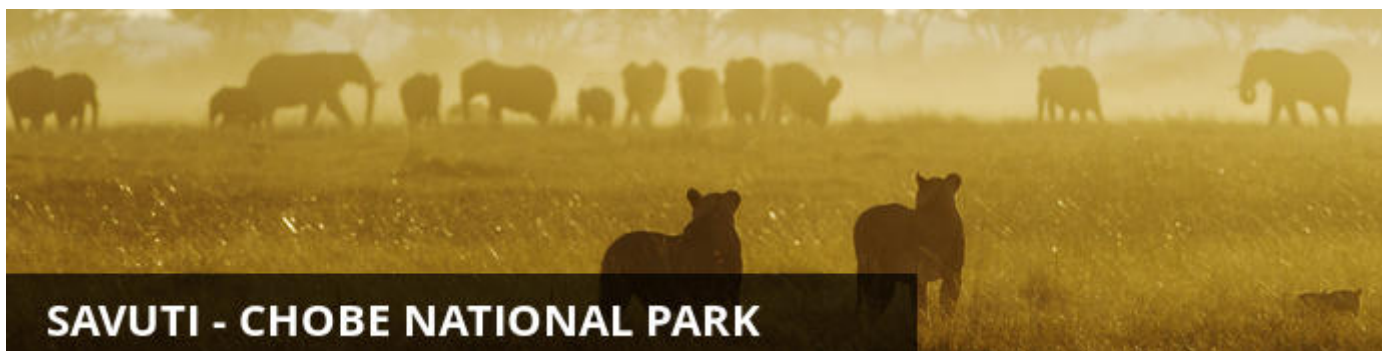



---

## Day 13: Bush Ways Mobile Safari, Savuti - Chobe National Park

---

Chobe National Park, with its diverse and striking landscapes, will be your next destination. As you continue your search for wildlife, you will traverse the drier region of Savuti where bull elephants dot the plains. Your overnight in Savute will be in a private designated campsite with bush ablutions. (B, L, D)



### SAVUTI - CHOBE NATIONAL PARK

When it comes to Botswana, Savute breaks all the rules: both for animal behaviour and for habitats. Here, lions hunt elephants, leopards take to fishing, the grasslands are vast and open and rocky hills punctuate the flat terrain.

Savute has proved itself somewhat of an enigma over the decades. During years of abundance its marsh fills with water, fed by the Savute Channel. The water weaves its way here from Angola via a chain of rivers and lagoons, spilling out into the marsh and drawing huge herds of elephants, wildebeest, zebras and buffalos.

In drier years, the channel shrinks into small pools and can evaporate completely, leaving the marsh dry and sending wildlife to the waterholes for water, where the tension between plains game and predators heats up over a parched and dusty landscape.

Wherever the plains game goes in Savute, the predators follow close-by, learning tricks of survival to adapt to the marsh's ever changing nature. Whether the water flows here or not is anyone's guess. The channel and marsh have a life of their own, independent both of the seasons and the annual rainfall.

Savute doesn't just offer a safari; it's also a feast for the eyes. Whitewashed skeletal trees set against green grass and huge blue skies, blinding red sunsets that spill purple and orange across the bush, and endless horizons that fade into a hazy mirage with the heat.

As Savute is part of Chobe National Park, a safari here is limited to game drives only. With the diversity of habitats, wildlife and landscapes that the marsh has to offer however, you'll still find yourself wishing you had more time to see it all.

---

### Overnight: Bush Ways Mobile Safari Semi Participation Savute

**Includes:** meals, activities, park fees



**Excludes:** beverages (alcohol, soft drinks and bottled mineral water) personal spending, travel insurance, sleeping bag and pillow

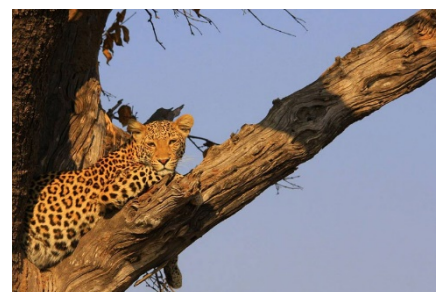
**Activities:** game drives in Savute

In the heart of Chobe National Park, Savute boasts most of the Chobe species, except for water-loving antelope. It is best known for its predators, particularly lion, cheetah and hyena, of which there are large resident populations.

One of its greatest mysteries is the Savute channel, which has over generations inexplicably dried up and recommenced its flow several times. In flood or not, Savute remains an exceptional wildlife viewing destination.

The camp consists of a main area with campfire and mess tent. Your accommodation is in 2.1m x 2.1m dome tents. A 5cm high density foam mattress is provided for each guest.

The Savute Marsh and surrounding area provides numerous opportunities for game drives. It is important to note that whilst camping in the National Parks you will need to return to camp by sunset to conform to the regulations and no off road driving is permitted.




---

## Day 14-16: Bush Ways Mobile Safari Chobe River, Chobe National Park

---

Today you head north towards the Chobe River where your game drives will meander along the banks of the river, followed by the call of the majestic African Fish Eagle. You will spend the following day on game drives to explore Northern Chobe National Park. Camping 2 nights in the Chobe River area in private designated areas with bush ablutions. (B, L, D)



The Chobe River Front is a remarkable wildlife area due to the permanent water source of the Chobe River. However its accessibility from Kasane and neighbouring towns of Victoria Falls and Livingstone has created quite a busy tourist area with larger hotels and lodges than you find in the more remote Okavango Delta. The spectacle of all the animals coming to drink and frolic at the water's edge is one to behold, particularly in the dry season (May - Oct) where water is scarce away from the river. It is an area famous for its abundance of elephants, a variety of predators and, in addition, you are likely to see herds of buffalo and possibly even roan and sable antelope. In the rainy season (Nov - Apr) the game is much less concentrated at the river as the wildlife spread throughout the greater area of Chobe National Park due to availability of surface water

from nearby pans. This assists the vegetation on the river banks in recovering from the massive herds that are attracted to the area in the dry months. The summer rains bring beautiful wild flowers, exquisite scenery, impressive bird life and an abundance of young animals usually born around November/December. The spectacular Chobe sunsets alone are worth a visit to the area. Please note that activities are restricted within the national park in accordance with government rules and regulations: these include no driving off-road, no walking and no driving after dark.

Chobe Game Lodge is the only lodge situated within the National Park. The remainder of the lodges, hotels and guesthouses in the Chobe area are located along the river in the town of Kasane, adjacent to the park. In addition there are some lodges situated further out of Kasane and in the Chobe Forestry Reserve, namely Muchenje Safari Lodge and Elephant Valley Lodge for those looking for something in more of a bush setting.

---

### **Overnight: Bush Ways Mobile Safari Semi Participation Chobe Riverfront**

**Includes:** meals, activities, park fees

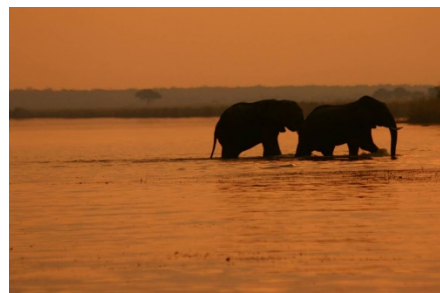
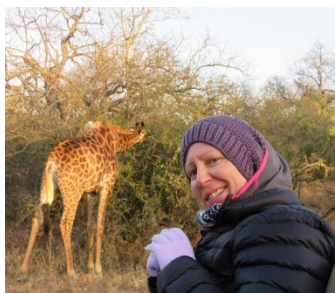
**Excludes:** beverages (alcohol, soft drinks and bottled mineral water) personal spending, travel insurance, sleeping bag and pillow

**Activities:** game drives in Chobe National Park

The Chobe Riverfront is a mecca for wildlife and is renowned for the greatest populations of African Elephant in the world. The teak forests and riverine vegetation are home to most of the major predators as well a multitude of mammals, reptiles and insects. Found in the far north of the 11,000km<sup>2</sup> Chobe National Park, the Chobe Riverfront is also home to over 400 species of birds.

The camp consists of a main area with campfire and mess tent. Your accommodation is in 2.1m x 2.1m dome tents. A 5cm high density foam mattress is provided for each guest.

The Chobe National Park provides numerous opportunities for game drives. It is important to note that whilst camping in the National Parks you will need to return to camp by sunset to conform to the regulations and no off road driving is permitted.




---

### **Day 16: Nguni Lodge (or similar), Victoria Falls, Zimbabwe**

After a short morning game drive you will and then drive to the Zimbabwe side of Victoria Falls (Visa required), where you will spend the night at a comfortable lodge. In the afternoon there will be time to visit the thunderous Victoria Falls and shop for curios. Dinner will be at your own expense at the lodge. (B, L)



At Victoria Falls, the earth splits open and swallows one of Africa's greatest rivers, the mighty Zambezi, creating the largest sheet of falling water on earth. As the water hits the narrow depths of the Batoka Gorge beneath, it blasts a cloud of mist skywards, lending the falls their local name 'mosi-oa-tunya' (the smoke that thunders). When the Zambezi is its fullest, the mist hangs a permanent raincloud above the falls, showering visitors on even the sunniest of days and visible for miles around.

Above the falls on the upper Zambezi, boats cruise the tranquil water at sunset while the distant spray catches the fading light downstream. Below the falls, the Batoka Gorge's rocky walls funnel the lower Zambezi into a chain of world-class rapids, prime for white water rafting.

Aside from being a UNESCO world heritage site and a natural world wonder, Victoria Falls also forms a natural border between Zimbabwe and Zambia. The falls can be seen from both countries, and for the most part the same activities are offered on both sides, from helicopter scenic flights to village visits and souvenir shopping.

Whether your idea of getting away from it all is a relaxed high tea in colonial grandeur or a heart-stopping bungee jump off a bridge, Victoria Falls keeps both the faint of heart and the most insatiable of adrenalin junkies busy for days.

From Zambia, a side on view of the falls is on offer with views into the Batoka Gorge, as well as the possibility of perching yourself at the edge of the falls on the vertigo-inducing Livingstone Island.

From Zimbabwe, you'll get a full-frontal view of three quarters of the falls' 1.7km wide curtain of water from viewpoints and footpaths meandering through a rainforest kept hot and humid by the spray of the falls.

### **Overnight: Nguni Lodge/Pioneers Camp or similar Guesthouse in Victoria Falls**

**Includes:** bed and breakfast

**Excludes:** additional meals, beverages, activities and personal spending

**Activities:** available at an additional cost

Nguni Lodge is well situated on the outskirts of Victoria Falls town. Nguni provides a comfortable, yet affordable, boutique accommodation in secluded surroundings.

The lodge has 14 rooms, 6 of which are Deluxe pool view rooms, 7 are Standard garden view rooms and there is 1 Family room which also overlooks the garden.

The lodge has a guest only restaurant, the Kraal, in which breakfast, lunch and dinner is served on a daily basis. Breakfast is included in the rates and with notice guests can book for the set dinner menu.

Helpful reception staff are available to provide information on all the facilities and activities in the Victoria Falls area and are able to recommend local restaurants to visit depending on your tastes and interests. Staff can assist you in booking any activities and Nguni Lodge provides transfers to and from the Victoria Falls airport on request.





## Day 17: End of Itinerary

The safari officially ends after breakfast on Day 17, at the lodge. Transfers and post travel extensions can be arranged.

### Travel Information

- Please take note of our Booking Terms & Conditions. It will be understood that these have been read and accepted by you on receipt of confirmation of the booking.
- For your safety and peace of mind, on confirmation of your booking, we strongly recommend that Travel Insurance is arranged to cover cancellation, curtailment, emergency evacuation, medical and repatriation expenses, damage/theft/loss of personal luggage, money and goods.
- Road and air transfers and activities are quoted on a seat basis (shared) unless otherwise requested or specified. Passengers may have various stops en-route to a destination. The transfer or charter company reserves the right to specify departure and arrival times. Private charters can be requested at an additional cost.
- Passengers weighing over 100kg should please advise us at the time of booking, as we may need to cost in an additional seat on internal flights for your safety and comfort.
- The costs are subject to change at any time due to fluctuations in fuel costs, taxes, levies, government regulations, rate of exchange and factors that are imposed upon us by our suppliers that are beyond our control.
- Please advise us of the ages of children (under 18) travelling, together with their date of birth, at the time of booking as not all lodges accept children and there may be restrictions or conditions which can affect pricing.
- We recommend that optional activities be booked in advance at time of confirmation to guarantee availability e.g. Helicopter Flight of the Angels in Victoria Falls
- Please allow a minimum 2-3 hours connection time in Johannesburg for international flights. It is important that you check that your flight tickets have been issued in your full names as per your passport.
- We require full payment for international and domestic scheduled flights at the time of confirmation e.g. Air Botswana Johannesburg to Maun, Proflight Livingstone - Lusaka and so on. We are not able to guarantee any flights before receipt of payment as seats are often held for a limited period before ticketing is required so this is a time sensitive issue. Air tickets are considered non refundable unless otherwise specified. Please confirm the details with your consultant at the time of booking.

### **Passports, Visas and Travel Documentation**

Your passport must have at least 6 months validity before the expiry date and 6 empty pages (not including the endorsement pages). The onus is upon guests to ensure that passports and visas are valid for the countries visited. Please note that certain visas can take up to 3 months to be processed so please consider this when booking.

If you are travelling with children through Southern Africa please be aware that you will be required to have certified copies of their unabridged birth certificates, and passports on hand. If you are not their legal parents, or if only one of you is travelling – you will need to have consent in the form of an affidavit giving you permission to travel with the child.

**Inter-camp transfers**

Due to the vast distances involved in travelling in the remote areas of Southern Africa - your itinerary may include road, boat and air transfers in small aircraft.

On shared air transfers, all the flight times between lodges are arranged a few days before the flights take place to avoid endless schedule changes. The lodge or camp where you are staying will be advised of your departure time the day before travel and will ensure that you are at the airstrip on time. Although every effort will be made to ensure that guests are transferred together in one vehicle / aircraft, this cannot be guaranteed, especially with larger groups. The aircraft used for inter-camp transfers vary in size from 3, 5, 7 and 12 seater aircraft. We recommend that guests susceptible to motion sickness take appropriate precautions due to flying conditions.

**Weight & Luggage Restrictions**

There are strict luggage restrictions in place on any itinerary, which includes light aircraft transfers for safety reasons. Luggage, including camera equipment and hand luggage, is restricted to 20 kg per person travelling on seat rates. Only soft bags will be accepted - no hard suitcases or bags with wheels can be transported, as they physically cannot fit into the aircraft.

The maximum dimensions of the soft bags that can be accommodated are as follows: 25cm/10 inches wide x 30cm/11 inches high and 62cm/24 inches long. Please keep in mind that the baggage compartments on the light aircraft are only 25cm high, so the pilots must have the ability to manipulate the bag into the compartment. Note that laundry can be done on a daily basis at most camps and lodges.

Should you arrive with excess baggage without prior warning, your baggage could be delayed, as we may have to fly the baggage into camp at a later stage at considerable extra cost to you. However, should you notify us in advance that your baggage will exceed the limit; we may be able to assist you with alternative arrangements e.g. storage or purchase of additional luggage allowance.

For bookings including flights within Zambia & Mozambique, please note luggage weight exceptions under destination information.

**Lost Luggage**

Lost luggage on international flights is a common problem facing travellers today. We suggest that you pack a small bag with your essentials, including any life sustaining medication, which can be carried with you as hand luggage. If travelling as a couple or family we suggest that you split your clothing between bags so that if one bag gets lost, you will have basic items on hand to see you through the first couple of days while we try and recover your lost baggage.

Please note that whilst we try our utmost to locate and re-unite you with your bags, that there may be charges involved in getting your bags to remote areas, which would be for your cost. Please remember to report the lost luggage to the airline as soon as you make the discovery - the airline will issue you with a Baggage Claim Form, which you will need in order for us to trace the bag.

**Health and Dietary**

Please note that you are travelling to a Malaria-risk area. Please consult your doctor for medical advice prior to travel.

Although usually safe to drink, we do not recommend that you drink the tap water. Filtered water is available at the camps and lodges.

The camps are isolated and generally have limited power supply and access to supplies. Please notify us in advance of any special dietary requirements, medical conditions and medical equipment you may need with you. Please carry critical medication in your hand luggage.

Yellow Fever Certificates - are only required if you have travelled to a Yellow Fever area as designated by the World Health Organisation. Please check with your Travel Clinic or doctor well in advance of your departure date.

### **General Travel Information**

- There is no or limited electricity and cell phone coverage in the camps and lodges excluding major towns and cities. All camps do make provision for charging cameras and electronic devices.
- Please ensure that you do not pack any valuables, cameras, cash, laptops in your checked in luggage – these should be kept on your person at all times.
- Please notify us immediately of any changes to flight arrival and departure details as this affects onward transfer arrangements.
- Please note that most camps & lodges in Botswana do not have double beds. Twin beds are pushed together to make up a double room.
- Although every effort is made to adhere to schedules the company reserves the right and in fact is obliged to occasionally change routes and camps on safaris as dictated by changing conditions or unforeseen circumstances.
- By confirmation of the booking, you acknowledge that you have been made aware and accept that the tour carries inherent risks, and that you voluntarily assume all risks which are associated with the tour. You will be required to sign indemnities at the various camps, lodges and service providers, and abide by their operators code of conduct in order to ensure your safety.
- If you have any cause for complaint while travelling, you should immediately bring it to the attention of the camp manager and / or our Maun office that will attempt to resolve the situation immediately.
- Do not remove any animal artefacts, flora or fauna from any of the areas you visit, as there are strict international regulations on the export of such items.

Please refer to the **Safari Information** for further details on preparing for your safari.



### **Visa**

Some visitors need to apply for visas before arrival please check with your Embassy.

For more information on visas please visit the following address:

Botswana Government - Visa Requirements

### **BORDER CROSSINGS**

#### **Currency**

The currency of Botswana is the Pula (BWP). US\$ Dollar notes (2007 Series onwards), and Visa and MasterCard are accepted.

#### **Internal Flights and Transfers**

Due to the remote areas the camps and lodges are based in, transfers between camps may take place by boat, mekoro, game drive vehicle or light aircraft.

#### *Flight times around Botswana | Approximate flying times*

Flight duration times (as listed below), are to be used as an average guideline. They are based on actual flying time, and passengers may have various stops en-route to a destination affecting the total travel time. Your pilot will brief you of your flight route and duration during the safety briefing.

Maun - Delta: 15 to 30 minutes

Delta – Delta: 10 to 20 minutes

Delta - Linyanti: 30 to 40 minutes



Maun – Linyanti: 50 to 60 minutes  
 Linyanti - Kasane: 40 to 60 minutes  
 Maun/Delta - Kasane: 60 to 80 minutes  
 Maun - Makgadikgadi/Desert: 40 to 60 minutes

#### *Departure Taxes*

Departure taxes are included in ticket prices.

#### **Weight & Luggage Restrictions**

See Booking Information



#### **Currency**

The currency of Zimbabwe is the American Dollar (US\$). US\$ Dollar notes (2007 Series onwards), and Visa and MasterCard are accepted. Always have enough US\$ cash available in smaller denominations in the event where ATM's and Credit Card facilities are not operational.

#### **Visa**

Fees for Visitors to Zimbabwe who are eligible to receive their visa on entry

Europe and USA: US\$ 30.00 for single entry/ US\$ 45.00 for double entry.

UK & Ireland: US\$ 55.00 for single entry/ US\$ 70.00 for double entry.

Canada: US\$ 75.00 for single entry/ double entry to be obtained from local embassy prior to travel

Some visitors need to apply for visas before arrival - please check with your Embassy, Zimbabwe Government Visa Requirements. ALWAYS have cash available in the correct US\$ amount at ALL ports of entry.

#### **Kaza Univisa – Zimbabwe and Zambia**

Travellers planning to visit both Zimbabwe and Zambia should apply for a UniVisa (also known as KAZA visa). The visa can be obtained in advance, as well as at ports of entry, but cannot be guaranteed.

The UniVisa allows travellers 30 days travel within both Zambia and Zimbabwe, and is also valid for daytrips to Botswana. Travellers must remain within Zambia & Zimbabwe for the visa to stay valid. Visiting Botswana as a daytrip will not affect the visa's validity, provided travellers return to Zambia or Zimbabwe the same day.

#### **Internal Flights and Transfers**

Due to the remote areas the camps and lodges are based in, transfers between camps may take place by boat, train, game drive vehicle or light aircraft.

#### **Departure Taxes**

International departure taxes are included in the scheduled flight rates. However light aircraft transfers from Victoria Falls Airport to Livingstone or Kasane require an International Departure tax of US\$35 per person & AIDF Levy of US\$15 = US\$50 per person to be paid in cash.

Domestic departure taxes are payable in cash at the airport, for any flights departing internally from any registered, manned airport. These include Harare, Bulawayo, Kariba, Hwange and Victoria Falls Airport. The amount is US\$10 departure tax + US\$5 AIDF Levy = US\$15 per person. We recommend small denominations for

easier and quicker transactions as change is not always available. Traveller's cheques and credit cards are NOT accepted.

**Weight & Luggage Restrictions**

See Booking Information

---